

# Heavy-Duty Slide Options

Available in a .75" side space

3600 Slide Series

7900 Slide Series

9300 Slide Series



## Heavy-Duty Slide Options

There is a wide gamut of projects designed with a .75" side space dimension allotted for sliding hardware. Accuride offers a complete selection of RoHS-compliant products with special features that enhance applications from industrial storage to manufacturing equipment.

### Model 3600

With a load rating up to 273 lbs. [124 kg], this slide works well in workstations, machinery, and mechanical devices.

- Full extension.
- Non-disconnect.
- Hold-in detent.
- Even lengths 12"–28" [305–711 mm].
- Clear zinc finish.

### Model 3607

Lock out and lever disconnect benefit applications such as machinery where component assemblies are pulled out for service and maintenance.

- Load rating up to 273 lbs. [124 kg].
- Full extension.
- Lever disconnect.
- Lock-out feature to hold conveyances in an open position.
- Even lengths 12"–28" [305–711 mm].
- Clear zinc finish.

### Models 7950 and 7957

An intermediate load-rating choice that is ideal for toolboxes, industrial storage, carts, and machinery chassis.

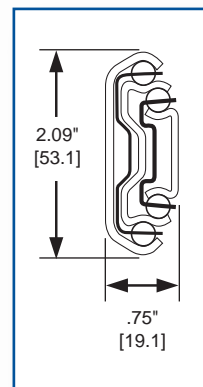
### Common Features

- Dual mounting: Side mount load capacity up to 350 lbs. [159 kg]; Flat mount load capacity up to 150 lbs. [68 kg].
- Accommodates drawers up to 42" wide [1067 mm].
- Even lengths 12"–36" [305–914 mm].
- Clear zinc finish.
- Available by special order: Models 7937 (lever disconnect and 7930 (non-disconnect), which offer the same features in a narrower cross section width of .724" [18.4 mm].

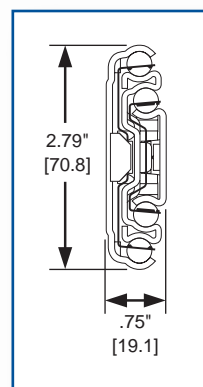
### Model 3601

This product offers heavy-duty performance and over travel for utility and industrial truck bodies, machine tools, and mechanical devices.

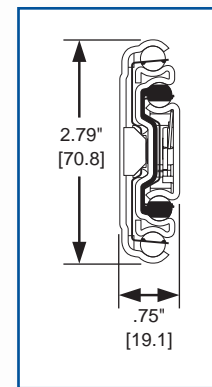
- Load rating up to 255 lbs. [116 kg].
- 1" [25 mm] over travel.
- Non-disconnect.
- Hold-in detent.
- Even lengths 12"–28" [305–711 mm].
- Clear zinc finish.



**Model 3600**



**Model 7950**  
Non-disconnect



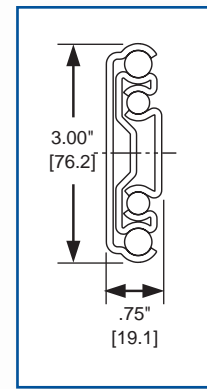
**Model 7957**  
Handed lever disconnect

## 9300 Slide Series

These are the heaviest load-carrying slides of the group, designed for demanding conditions such as mobile storage in commercial and emergency vehicles.

### Common Features:

- Full extension.
- Silencing features for quiet operation.
- Non-disconnect to provide safe conveyance of loads.
- Most models are compatible with the optional Platform Bracket Kit, which facilitates six additional mounting options.
- Clear zinc finish.



Model 9300

## 9301

- May be side or flat mounted.
- Even lengths 10"–36", 40", 42", 44", 48", and 60" [254–914, 1016, 1066, 1118, 1219, and 1524 mm].
- Load Ratings
  - ◆ Flat mount 150 lbs. [68 kg]/pair – Drawers up to 32" [813 mm] wide\*
  - ◆ Mobile applications 300 lbs. [136 kg]/pair – Drawers up to 32" [813 mm] wide\*
  - ◆ Frequent usage 400 lbs. [181 kg]/pair – Drawers up to 42" [1067 mm] wide\*
  - ◆ Moderate usage 500 lbs. [227 kg]/pair – Drawers up to 18" [457 mm] wide\*



Model 9301

## 9307 - Lock-out

- Lock-out feature with front latch release holds drawers securely in a fully extended position.

## 9308 - Lock-in and Lock-out

- Lock-in and lock-out features are activated with a front latch mechanism. The lock-out feature keeps drawers in an open position for safe access, while the lock-in keeps drawers securely closed for transit.

### Common Features:

- Even lengths 12"–36", 40", 42", 48", and 60" [305–914, 1016, 1067, 1219, and 1524 mm].
- Load Ratings
  - ◆ Mobile applications 300 lbs. [136 kg]/pair – Drawers up to 32" [813 mm] wide\*
  - ◆ Frequent usage 400 lbs. [181 kg]/pair – Drawers up to 42" [1067 mm] wide\*
  - ◆ Moderate usage 500 lbs. [227 kg]/pair – Drawers up to 18" [457 mm] wide\*
- Model 9308 may be combined with Model 9301 (non-locking). Available as part number 9308-5, this special packaging includes one standard 9301 and one right-hand 9308. Lengths offered include 14"–36", 40", 42", 48", and 60" [356–914, 1016, 1067, 1219, and 1524 mm].



Model 9308

\* Load ratings based on 10,000-cycle test.

## Custom Features

For high volume requirements or OEM designs, ask your Accuride representative about the following special features that may be incorporated into some of these heavy-duty products:

### Self-Closing

- Helps bring drawers to a close, preventing bounce back and re-opening.
- Mechanism incorporated into slide profile.
- Strong detent holds drawers closed.

### Easy-Close

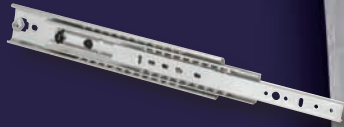
- Brings drawers to a smooth, gentle close.
- Integrated mechanism.
- Helps to prevent slam and bounce back of drawers.
- Quiet operation.

### Action-Assist®

- Assists with moving the drawer into the fully open and fully closed positions with controlled motion at either end of the slide travel.
- Fully concealed hardware.
- Available in Self-Closing and Easy-Close.
- High-end controlled action ensures full extension and closure.
- Assist mechanism helps hold drawer in open position.

### Touch Release

- Drawers or shelves are held in a closed position until the drawer front is depressed. This releases the slide, propelling it open approximately 2 inches.
- Eliminates the need for knobs or pulls.
- Provides for hands-free operation in toe-kick applications.



Model 3600



Model 3601



Model 7950



Model 9308

# Accuride

12311 Shoemaker Avenue  
Santa Fe Springs, CA 90670  
(562) 903-0200  
(562) 903-0208 Fax  
[www accuride.com](http://www accuride.com)

©2010 Accuride International Inc.  
2169D - New-0910-10M-Alpha

*Authorized Distributor*



RESTRICTION OF  
HAZARDOUS  
SUBSTANCES



**Mixed Sources**

Product group from well-managed  
forests, controlled sources and  
recycled wood or fibre

Cert no. BV-COC-080904  
[www.fsc.org](http://www.fsc.org)

© 1996 Forest Stewardship Council