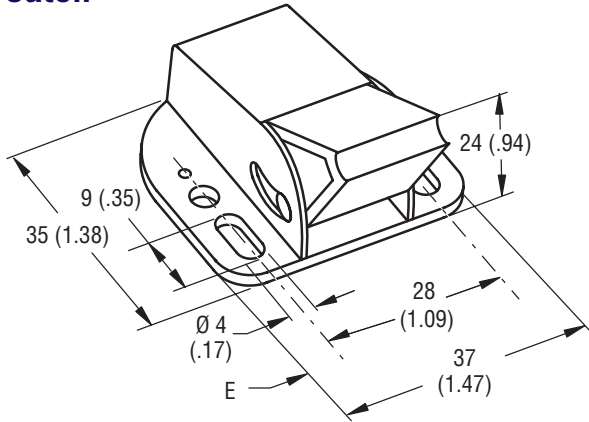


Southco® Push to Close Latch

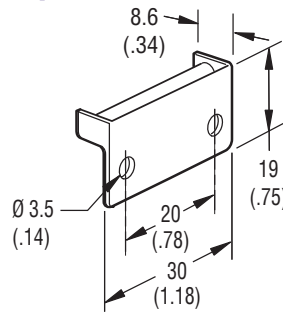
Snappy

- Over-center latching for vibration resistance
- Self adjusting pawl accommodates misalignment
- All corrosion resistant material

Catch

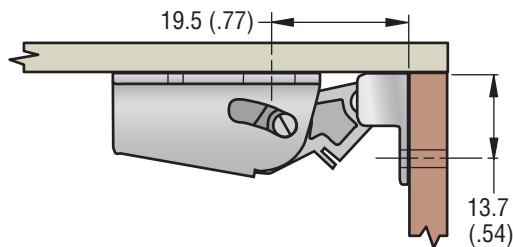


Keeper



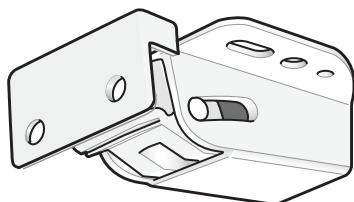
COLOR	PART NUMBER
White	MT-01-10-7

Panel Preparation

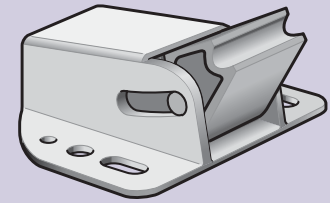
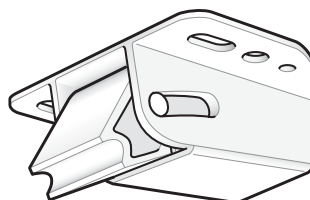


Operation

Closed



Open



Material and Finish

HOUSING, PAWL, GUIDE AND KEEPER:
Nylon, white.
SPRING: 300 Series stainless steel,
passivated.

millimeter (inch)
millimeter
(inch)

Dimensions without tolerances are for reference only.