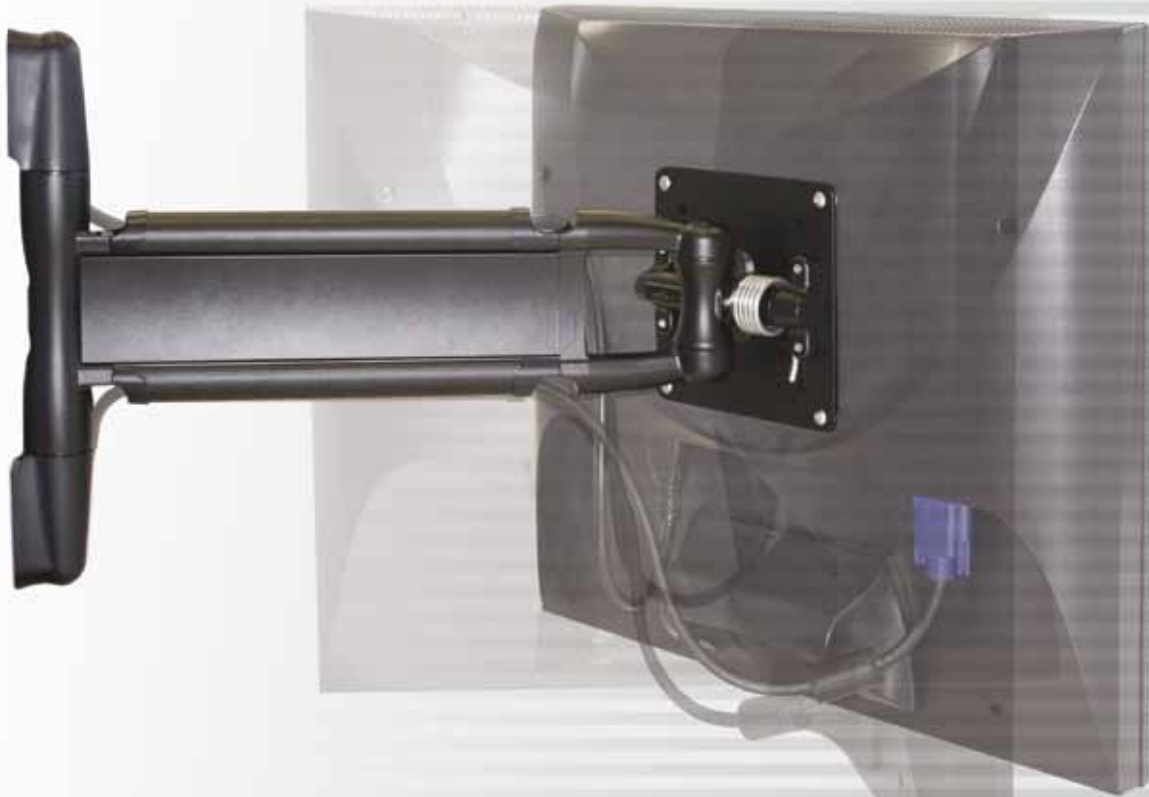


The Southco Dynamic Mounting Arm

- Enhances the user experience combining, smooth intuitive operation with secure holding
- Precise operating efforts with no adjustment or maintenance
- Integrated wire management for a clean look





AV Series Dynamic Mounting Arm

Tilt, Swivel and Swing

- Intuitive grab and move operation enhances the user experience**

No knobs or tools required to reposition the display

Precise control of operating effort ensures ideal “feel” and eliminates “drift”

Holds securely, even in applications with dynamic loading

- Low profile in the stowed position**

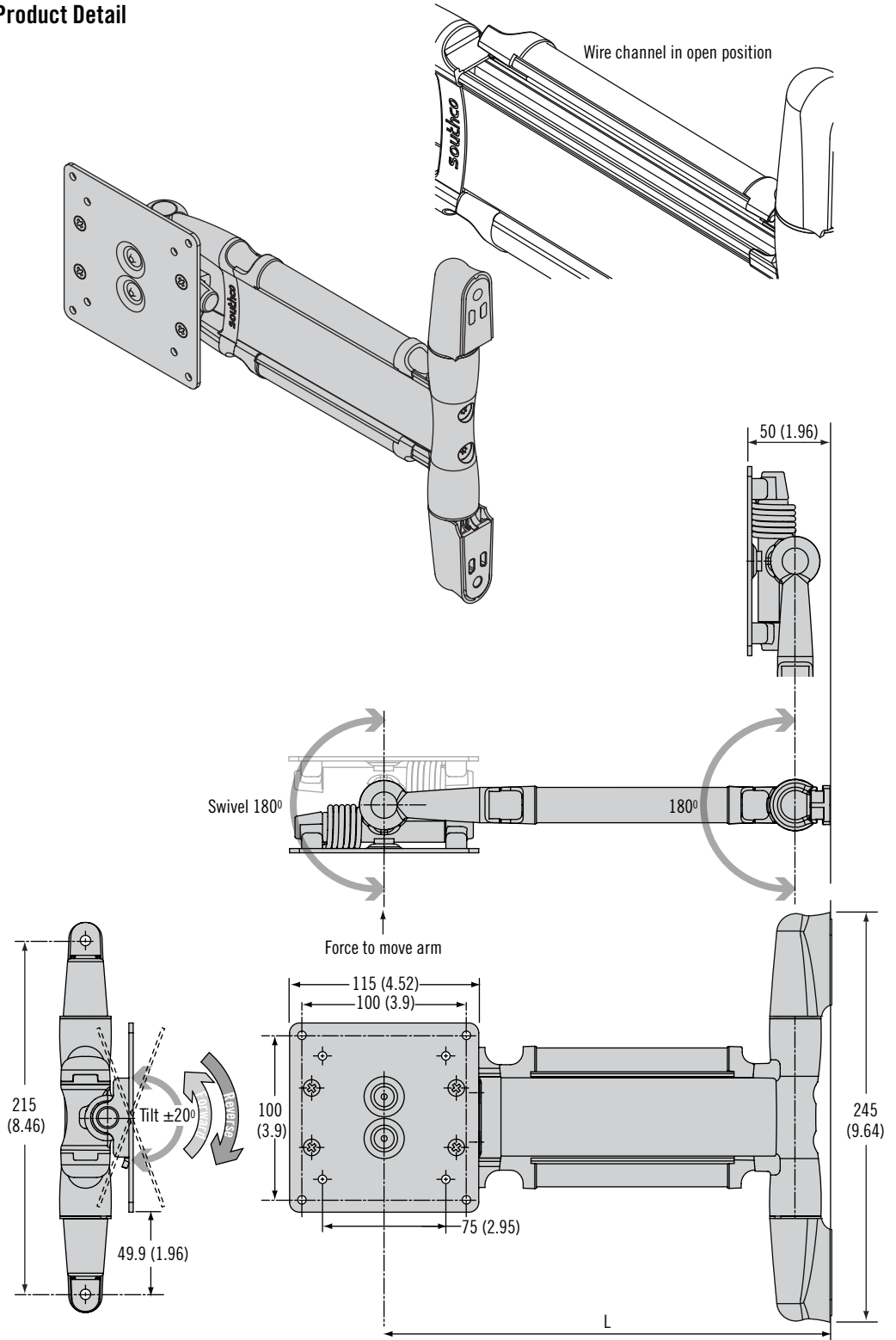
Folds to within 50 mm of the wall

- Snap-open channels simplify wire management**

Easy display installation and replacement

- Factory assembled and ready for use**

Product Detail



VESA MIS-D, 100, C



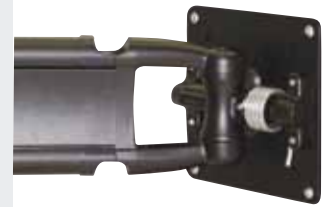
www.southco.com/AV

Dimensions in millimeters (inch) unless otherwise stated

southco
CONNECT · CREATE · INNOVATE

AV Series Dynamic Mounting Arm

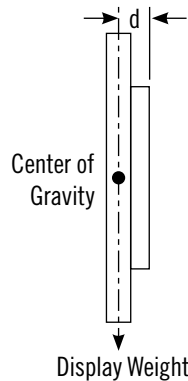
Tilt, Swivel and Swing



Specification and Selection

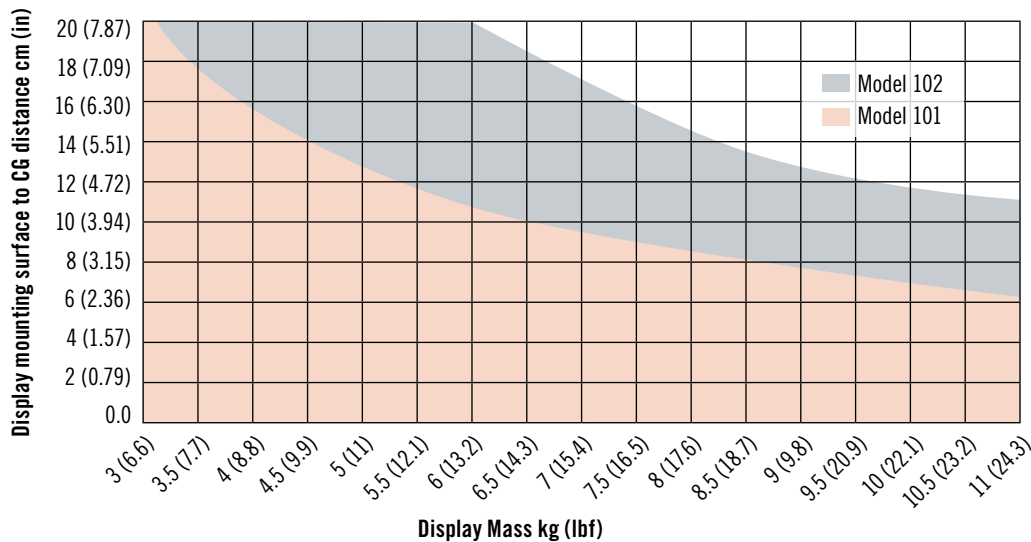
Step 1

Determine display weight and distance (d) from mounting surface to center of gravity.



Step 2

Use chart below to select model (101 or 102).



Step 3

Complete part number by selecting length and color options below.

K	Length (L)	Average ultimate load
15	150 (5.9)	2000 (450)
25	250 (9.8)	1200 (270)
35	350 (13.8)	850 (190)
45	450 (17.7)	660 (150)

Model S	Force to move arm N (lb)	Tilt Torque N•m (in lbf)		Swivel Torque
		Reverse	Forward	
101	22.2 (5)	7.9 (70)	1.13 (10)	2.3 (20)
102	33.8 (7.6)	15.4 (136)	2.26 (20)	3.4 (30)

F	Color
50	Black
76	White

AV - D30 - **K** A **S** - **F**

- Smooth operation enhances the user experience
- Adjust the display without knobs or tools
- Holds securely in every position

Material and Finish

Aluminum alloy, powder coated

Performance Details

Cycle performance: 20,000 cycles within $\pm 20\%$ of static torque specification

Max. dynamic working load:

Model 101: 66N (15 lbf)

Model 102: 98N (22 lbf)

Average ultimate load: See table

Part Number

See table

Part Number Example

AV-D30-25A101-50 = Dynamic mounting arm, Model 101, 250mm Length, black



AV Series Dynamic Mounting Arm

Tilt, Swivel and Swing

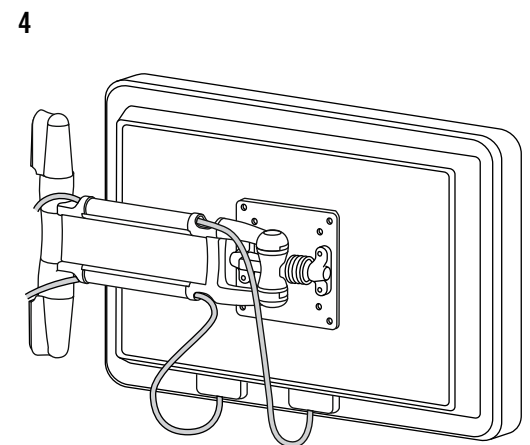
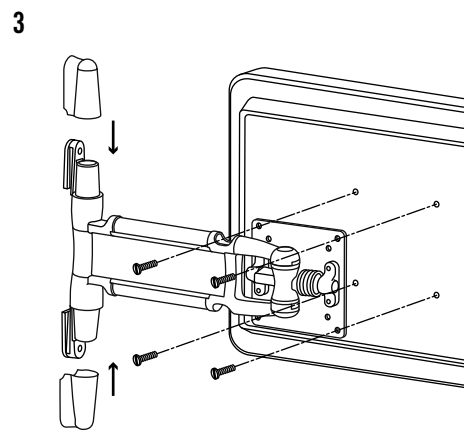
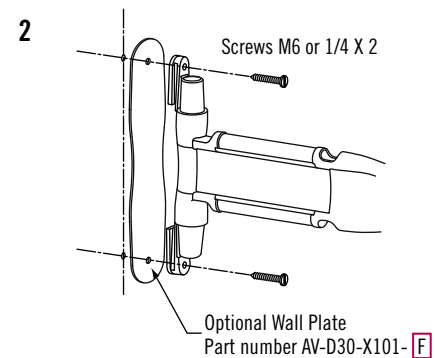
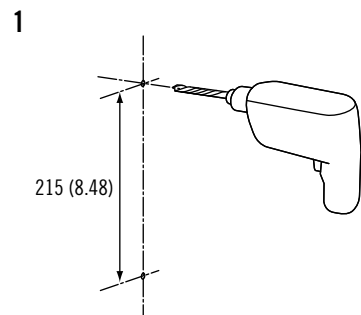
- Smooth operation enhances the user experience
- Adjust the display without knobs or tools
- Holds securely in every position

Installation

1. Determine desired mounting location
2. Mark upper and lower mounting holes. For ideal hole location, mark upper hole first, then use a plumb line to ensure vertical orientation between the upper and lower holes
 - a. For thru-bolt installation, drill or punch holes as indicated on trade drawing and install using 1/4-20 or M6 screws.
 - b. For installation in wood studs, drill a 3/16 inch pilot hole and install using a 1/4 inch lag bolt. Do not over tighten.
 - c. For compliant mounting surfaces (gypsum board, etc.) use optional wall plate, sold separately.

Caution: Because of the wide variety of available wall materials, it is the installer's responsibility to ensure that the materials, and structure to which the arm is mounted, and the hardware selected will provide adequate support.

3. Slide on mounting hardware covers and attach display using manufacturer's recommended hardware.
4. Route wiring as needed



For complete installation and operation instructions please consult the product manual included in every package or available to download from www.southco.com

Dimensions in millimeters (inch) unless otherwise stated

Global Corporate Headquarters and Americas Customer Service & Technical Support Center
Concordville, PA – USA · Tel: (1) 610-459-4000 · Fax: (1) 610-459-4012



www.southco.com/AV

Southco® AV ARM NA 10-09

southco
CONNECT · CREATE · INNOVATE