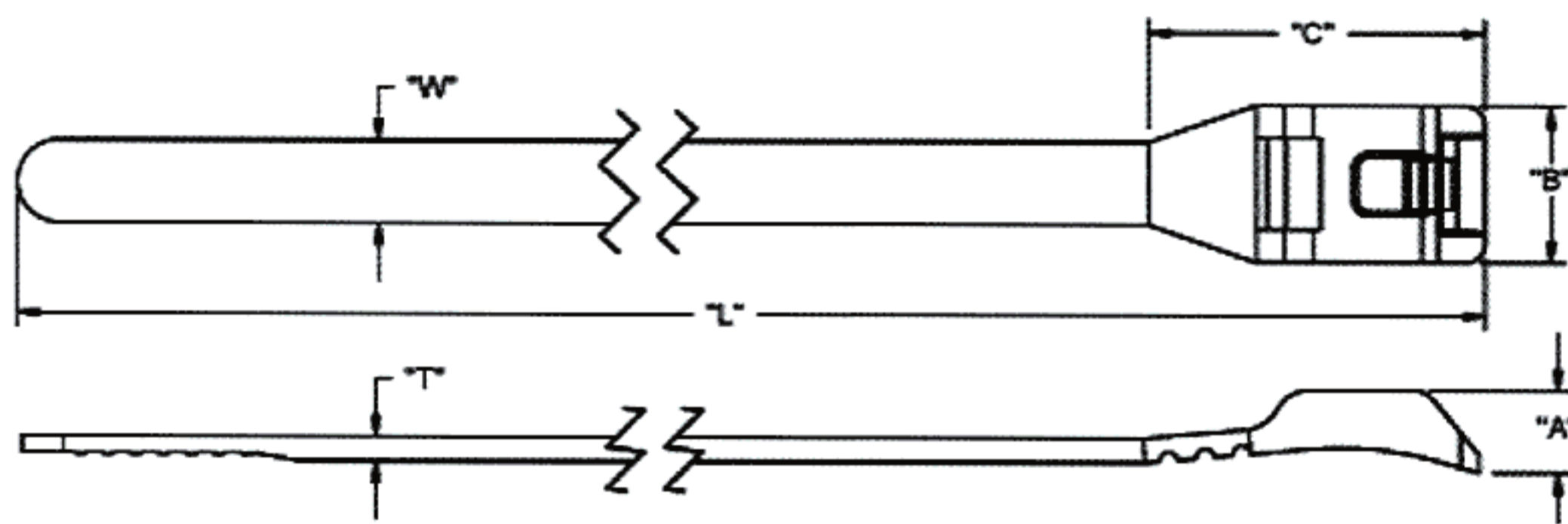
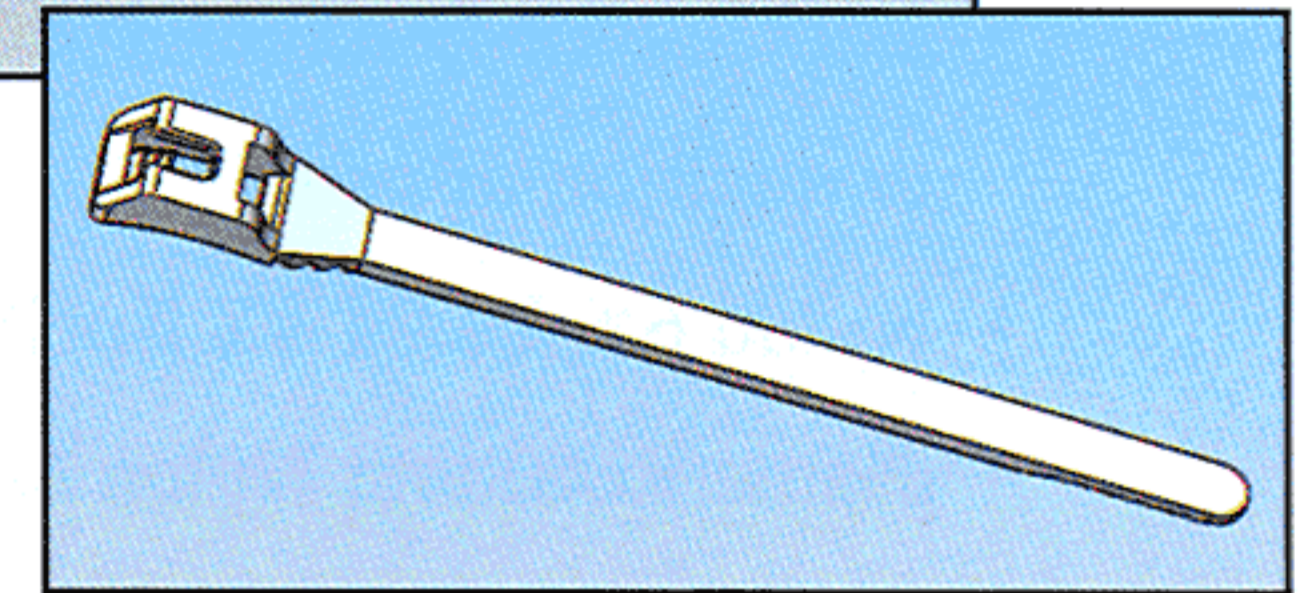
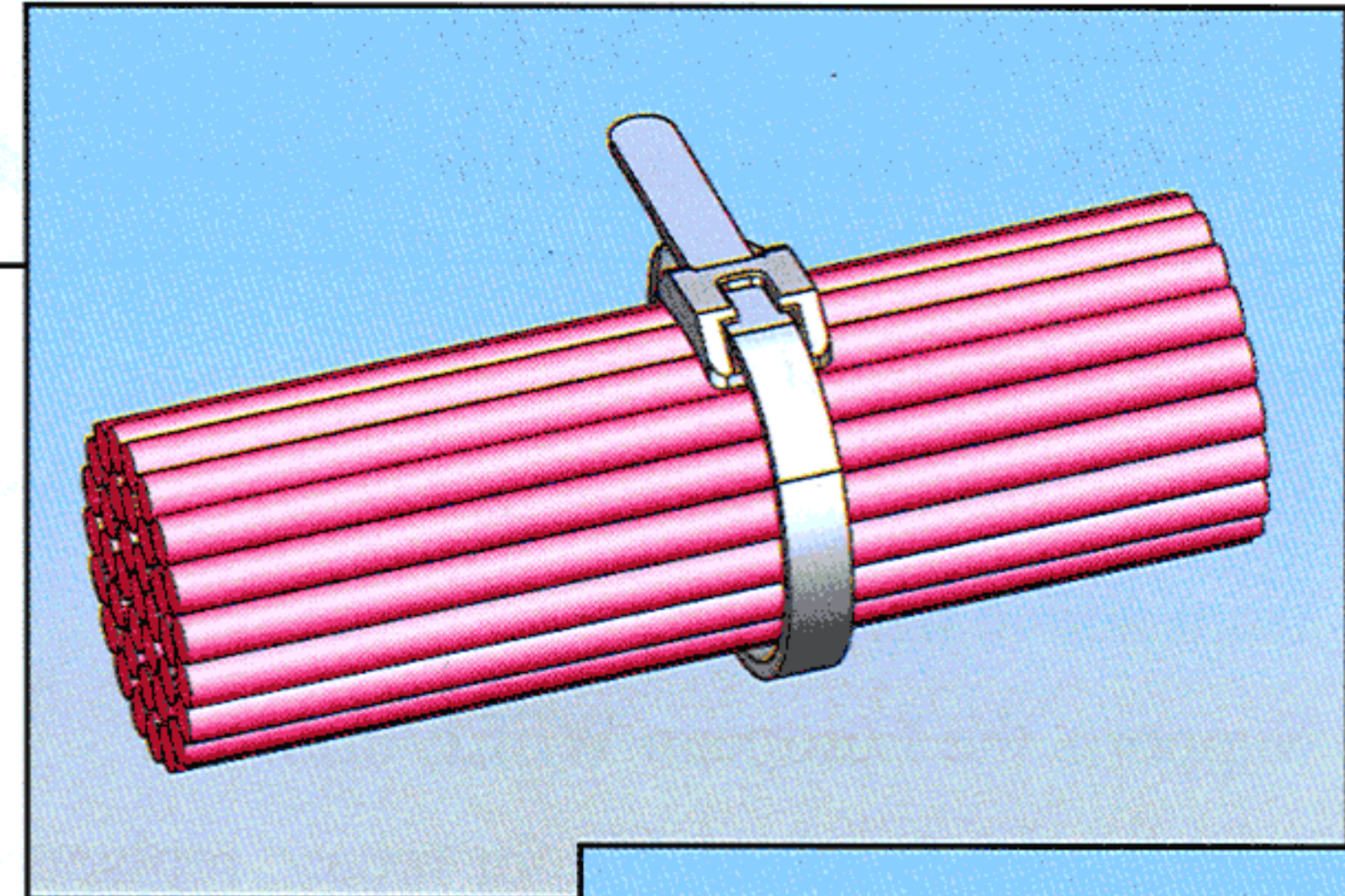


## Introducing the *WITLP*— Low Profile Cable Tie

### Features and Benefits

- Low head height eliminates snags, cuts and abrasions
- Flexible head easily bends around small bundles
- Low profile ideal for confined spaces
- Natural Nylon 6/6 UL94 V2 RoHS Compliant Material
- Black UV Stabilized Nylon 6/6 UL 94 V2 RoHS Compliant Material
- Easily installed by hand

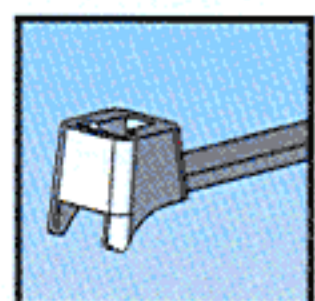


### Markets

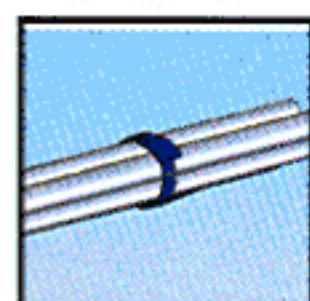
- Marine
- Outdoor
- Playgrounds
- Automotive
- Office Equipment
- Security
- White Goods

WITLP										
Mat'l: Nylon 6/6, RMS-01 Color: Natural	Mat'l: UVB Stabilized Nylon 6/6, RMS-46 Color: Black	Bundle Dia.	"A" ± .020 (0.51)	"B" ± .020 (0.51)	"C" ± .030 (0.76)	"L" ± .030 (0.76)	"T" ± .005 (0.13)	"W" ± .005 (0.13)	Min. Loop Tensile lbs. (kg.)	Standard Pack
WITLP-50R-M	WITLP-50R-UVB-M	.375-1.750 (9.50-44.45)	.176 (4.47)	.337 (8.56)	.690 (17.53)	7.500 (190.50)	.053 (1.35)	.177 (4.50)	50 (22)	1000
WITLP-120R-C	WITLP-120R-UVB-C	.563-3.500 (14.30-88.90)	.270 (6.86)	.487 (12.37)	1.380 (35.05)	16.000 (406.40)	.075 (1.91)	.300 (7.62)	120 (54)	100

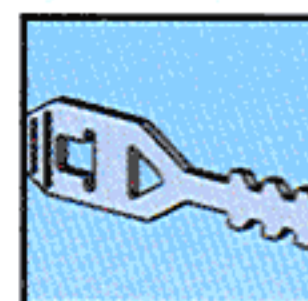
### Other Related Richco Product Solutions



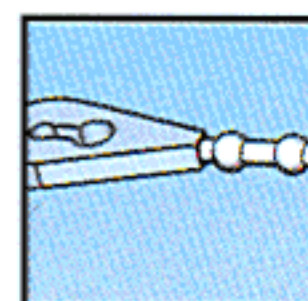
WITCH-50R



RKW



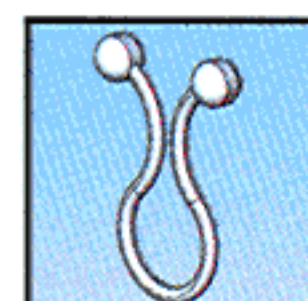
HT



BT



WIT



TL



SHC



KL