

POP®

Great engineering is not the only measure ... It's how dramatically it increases productivity.

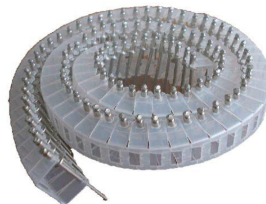
The **AutoSet™** is the State-of-the Art portable hand-held riveting system featuring pre-loaded **POP®** brand rivets on tape with an auto-feed riveting system. The result is an immediate increase in productivity as well as decreased in-place installation cost. The **AutoSet™** has a highly engineered one-touch cycle mechanism that allows one hand free to hold work pieces in place. The built-in Mandrel Collection System (MCS) results in and contributes to work place safety and cleanliness.

Featured with an innovative, adjustable vacuum system, the **AutoSet™** can be adjusted to meet your specific needs dependent upon the size of the rivet used in order to minimize air consumption. Targeted for middle to high volume applications, this fully portable, ergonomically balanced tool can be suspended both horizontally and vertically.

AutoSet™ is capable of setting 1/8" up to 3/16" aluminum-steel rivets.

Features & Benefits:

- Auto-feed & multi-set
 - **POP®** brand pre-loaded rivets on tape
- Quick operation
 - Reload time: 8-10 sec
 - Cycle time: 2 sec
- Easy to use
 - One-touch cycle
 - Built-in MCS
 - Adjustable vacuum
- Portable
 - One free hand
 - Ergonomically weight balanced
- Reliable
 - Three jaw system
 - Longer maintenance interval



The Americas

Emhart Teknologies
50 Shelton Technology Center
P.O. Box 859
Shelton, CT 06484 USA
Tel. (203) 924-9341
Fax. (203) 925-3109
Canada: + (514) 351-0330
Brazil: + 55 11 3871-6460
México: + 52 (555) 326-7100

Europe

Emhart Teknologies
177 Walsall Road, Perry Barr
Birmingham, B42 1BP, UK
Tel: +44 (0) 121 356-4811
Fax: +44 (0) 121 356-1598

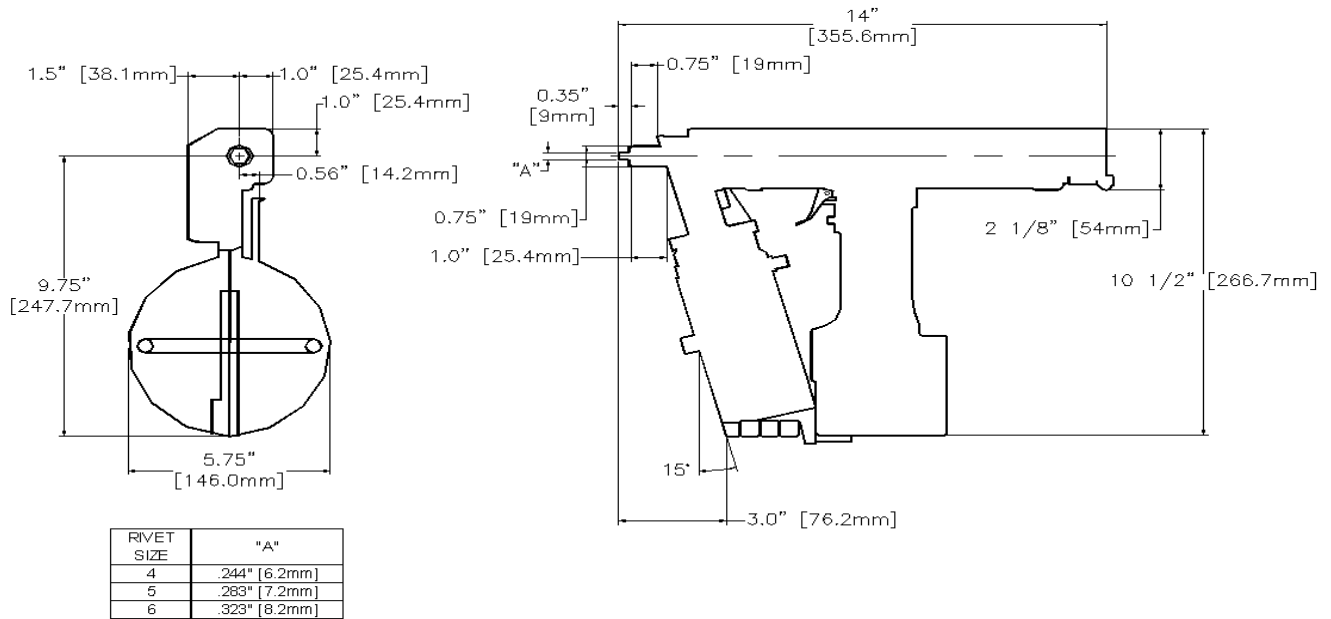
Asia

Emhart - N.P.R
3-6 Kiocho,
Chiyoda-Ku, Tokyo 102-0094, Japan
Tel: +81 (03) 3265-7291
Fax: +81 (03) 3265-7298

Visit our website at <http://www.emhart.com>

AutoSet™

AutoSet™ Tool Specifications



	Imperial	Metric
Tool Weight	5.0 lbs	2.3 kg
Rivet Capacity	AutoSet 5: 1/8" & 5/32" AutoSet 6: 3/16" (Al-St)	AutoSet 5: 3.2 mm & 4.0mm AutoSet 6: 4.8 mm (Al-St)
Capacity of Magazine & MCS	1/8" 5/32" 3/16"	100 Rivets 80 Rivets 60 Rivets
Rivet Types	Full Range POP® rivets (to order)	
Stroke	0.71 in	18 mm
Pulling Force	1300 lbs	5.8 kN
Air Consumption	Static: 3 scfm; Peak: 6 scfm	
Cycle Time	2 sec	
Load Time	8-10 sec	
Min. Air Pressure	85 psi	5.8 Bar
Air Flow Minimum	6 scfm	150 liter/min
Air Type	Lubricated- Inline or Manual	

Nosepieces & Parts

Rivet Size	Nosepieces			
	Open End Rivets		Closed End Rivets	
	Domed	Countersunk	Domed	Countersunk
1/8" (3.2 mm) diameter rivets	DP220-501	DP220-527	DP220-500	DP220-525
5/32" (4.0 mm) diameter rivets	DP220-502	DP220-528	DP220-501	DP220-527
3/16" (4.8 mm) diameter rivets	DP220-503	DP220-529	DP220-503	DP220-529

Parts	AutoSet 5 (PN)	AutoSet 6 (PN)
3-Jaws	DP220-618	DP220-619
Jaw Pusher	DP220-61	DP220-215
Slide Pipe	DP220-62	DP220-216
Magazine Assembly	DP220-616	DP220-617
Hydraulic Oil – 1qt container	DP220-806	
Molybdenum Grease	DP220-810	

**Emhart®
Teknologies**
POP®

A BLACK&DECKER COMPANY